

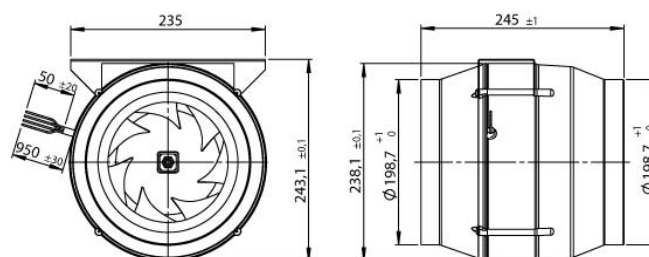
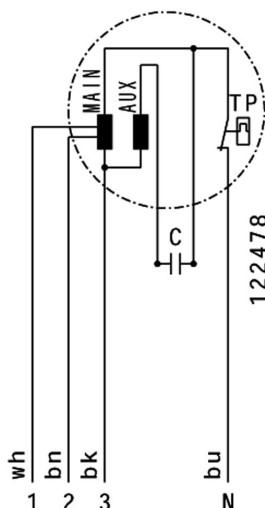
- diagonal impeller with stator
- Plastic housing
- 3-step or speed controllable
- integrated thermal switch
- including mounting bracket

## 230V 50Hz

Operating Point			1	2	3	4	5
Current	I	A	n. def.	0.46	0.53	0.55	n. def.
Power Consumption	P <sub>1</sub>	W	n. def.	105	120	125	n. def.
RPM	n	1/min	n. def.	2730	2600	2600	n. def.
SPL inlet	L <sub>WA5</sub>	dB (A)					
SPL outlet	L <sub>WA6</sub>	dB (A)					
SPL casing break out	L <sub>WA2</sub>	dB (A)					

Voltage	U <sub>N</sub>	230V ~	Speed Control	3-2-1
Current	I <sub>N</sub>	0.6 A	Motor Protection	TAI
Current	I <sub>max</sub>	0.6 A	Capacitor	3,5 µF / 450 V
Ambient Temperature	t <sub>U</sub>	50 °C	Isolation Class	F
Medium Temperature	t <sub>F</sub>	50 °C	Poles	2
			Weight	0 kg

Accessories for EL 200L E2M 01  
For more information see internet

- TEE 015**  
**5-Step Transformer**  
 Without motor protection
- TES 0145**  
**7-Step Transformer**  
 without motor protection
- GS 03**  
**Isolator Switch**
- VM 200**  
**Fast Clamps**  
 for noise reduction and sealing
- RSK 200**  
**Back Draught Shutter**
- RSK 200D**  
**Back Draught Shutter**  
 with seal
- SG 200 01**  
**Protection Grille**
- SG 200 02**  
**Protection Grille**
- SDS 200**  
**Duct Silencer, rigid**
- SDF 200**  
**Duct Silencer, flexible**
- FV 200**  
**Filter Box with Mat Filter G3**
- FT 200**  
**Filter Box for Bag Filter**  
 Without filter