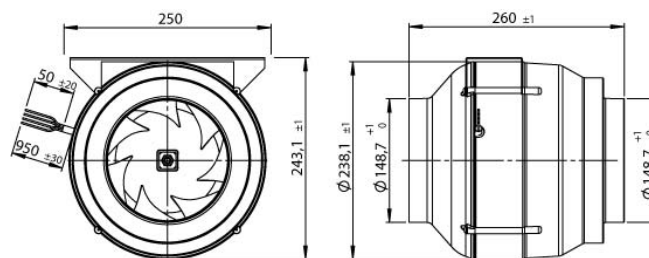
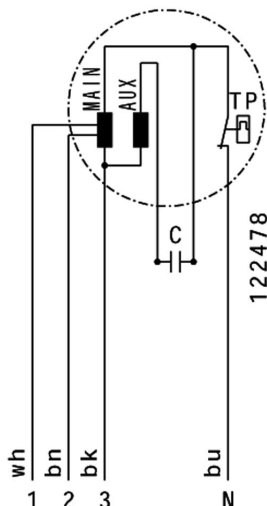


- diagonal impeller with stator
- Plastic housing
- 3-step or speed controllable
- integrated thermal switch
- including mounting bracket

230V 50Hz

Operating Point			1	2	3	4	5
Current	I	A	n. def.	n. def.	n. def.	n. def.	n. def.
Power Consumption	P ₁	W	n. def.	n. def.	n. def.	n. def.	n. def.
RPM	n	1/min	n. def.	n. def.	n. def.	n. def.	n. def.
SPL inlet	L _{WA5}	dB (A)					
SPL outlet	L _{WA6}	dB (A)					
SPL casing break out	L _{WA2}	dB (A)					
Voltage	U _N	230V ~	Speed Control		3-2-1		
Current	I _N	0.6 A	Motor Protection		TAI		
Current	I _{max}	0.6 A	Capacitor		3,5 µF / 450 V		
Ambient Temperature	t _U	50 °C	Isolation Class		F		
Medium Temperature	t _F	50 °C	Poles		2		
			Weight		0 kg		



Accessories for EL 150L E2M 01

For more information see internet

- TEE 015**
5-Step Transformer
 Without motor protection
- TES 0145**
7-Step Transformer
 without motor protection
- GS 03**
Isolator Switch
- VM 150**
Fast Clamps
 for noise reduction and sealing
- RSK 150**
Back Draught Shutter
- RSK 150D**
Back Draught Shutter
 with seal
- SG 150 01**
Protection Grille
- SDS 150**
Duct Silencer, rigid
- SDF 150**
Duct Silencer, flexible
- FV 150**
Filter Box with Mat Filter G3
- FT 150**
Filter Box for Bag Filter
 Without filter
- FTW 150**
Filter Box with Bag Filter F5
 Integrated heating coil